

# Directions

The Newsletter of the Surfside Presbyterian Church  
February 2008

## THE PASTOR'S PEN

The following article, written by Steve Troxel of "God's Daily Word Ministries", was sent to me by one our Elders here a Surfside. While I know very little about the writer of the article, I was Profoundly impacted by his words. In my last sermon I posed the question - "Do we love one another as Christ has loved us?" That question undoes me, because I know that even in my best moments, I do not come close. I need Jesus so desperately! I hope you are equally challenged by Troxel's challenge to us being sure to remember that we cannot love in this way unless we first receive the power to love from Christ.

Blessings,  
Tim Melton

### United in Purpose

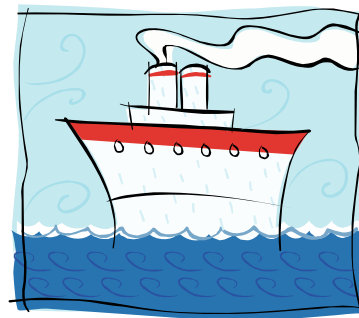
In the message "His Disciples" we saw how our love for one another demonstrates we are true followers of Jesus Christ; "By this all men will know that you are My disciples, if you love one another" (John 13:35). We saw our call for a sacrificial love, focused on those with clear needs the lonely, hurting, anxious, depressed or hungry - needs which require definite action.

But there is another expression of Christian love - a love which is still sacrificial, but one that requires us to withhold certain actions, place restraints on our words, and definitely increase our time in prayer. This is the love which leads to unity in our local fellowship.

### 1 Corinthians 1:10

**"I appeal to you, brothers, in the name of our Lord Jesus Christ, that all of you agree with one another so there may be no divisions among you and that you may be perfectly united in mind and thought."**

There is a story of a man lost at sea. He is treading water and has given up all hope. Suddenly, a ship appears on the horizon and moves his way. His strength surges as he wildly waves his arms, rescue is near! But as the ship gets closer, he sees the passengers yelling at one another; many are punching, kicking and spitting; and some are even being thrown overboard. It doesn't take long for the man to begin swimming as fast as he can AWAY from the ship.



We are passengers on the gospel ship, and God's Word continually calls us to unity; "conduct yourself in a manner worthy of the gospel of Christ...stand firm in one spirit, contending as one man for the faith of the gospel" (Philippians 1:27). If we are united with Christ, we ought to be "like-minded, having the same love, being one in spirit and purpose"

### Philippians 2:2

**As Jesus prayed to the Father, He made it clear why we are to unite: "so the world may believe that You have sent Me" (John 17:21).**

Unity is never a call for compromise on the essentials of the gospel. We must never give a single step of ground regarding the necessity and sufficiency of faith in the sacrifice of Jesus for the forgiveness of sin. But when we begin to divide over issues like the format of our worship service, the structure of our programs, or the look of our facility, perhaps we have stepped over the line of Biblical unity.

I can't define the exact line of unity in your local fellowship. But I can confidently suggest there is greater room for unity than what first appears. If all of us will honestly remove our pride and understand God's purpose in a unified fellowship, we will see much more room for grace and love. Let's truly show the love of Christ. Let's all draw closer and closer to Jesus and show the world we are united in Spirit, united in purpose.

Steve Troxel  
God's Daily Word Ministries

## WOMEN IN THE CHURCH

---

*WIC Bible Verse for 2008:*

*"Each one should use whatever gift he has received to serve others, faithfully administering God's grace in it various forms." 1 Peter 4:10*

Living with God

On January 6<sup>th</sup> the Women in the Church (WIC) hosted a luncheon for all of the new members of the church and their sponsor families. It was a wonderful time of fellowship and a time for all or the new member to get to know their sponsor families and the pastor's families.

The following WIC Council Members were installed at the 9:30 Service on January 13, 2008. If you want to learn more about the Women in the Church activities please contact one of the following:

President	Sandra Franklin, <a href="mailto:fs1166@sccoast.net">fs1166@sccoast.net</a>	903-1166
Vice President	Jeanie Gour, <a href="mailto:jregour@yahoo.com">jregour@yahoo.com</a>	293-3689
Secretary	Jackie Yarborough, <a href="mailto:jackalack1768@aol.com">jackalack1768@aol.com</a>	215-5206
Treasurer	Shelia Price, <a href="mailto:sohappy@sc.rr.com">sohappy@sc.rr.com</a>	293-5750
Christian Education & Growth	Barbara Thomas, <a href="mailto:BJT364@aol.com">BJT364@aol.com</a>	235-9290
Church Historian	Tracy Jenne, <a href="mailto:tracyjenne@aol.com">tracyjenne@aol.com</a>	215-9280

DID YOU KNOW?

There are Twenty Six (26) different WIC Ministries from which to choose to serve on.

DO YOU KNOW THE BEST WAY TO MEET NEW PEOPLE IN THE CHURCH?

Serve on one of the Twenty Six (26) WIC Ministries.

DO YOU KNOW HOW TO MAKE LIFE LONG FRIENDSHIPS?

Serve on one of the Twenty Six (26) WIC Ministries.

DO YOU KNOW WHO YOU CAN COUNT ON IN TIME OF NEED?

GOD FIRST and the many friends that you make at SPC.

LORD, WHAT'S NEXT?

Ask God to show you what he wants you to do. He will give you directions.

**"Show me your ways, O Lord: teach me your paths: guide me in your truth and teach me, for you are God my Savior, and my hope is in you all day long." Psalm 25:4-5**

The Tuesday morning Bible Studies began on January 15<sup>th</sup>. God has again blessed our church as the classrooms are filled with ladies wanting to know more about our Lord Jesus. Debbie Riddle is leading a Beth Moore Study entitled "Stepping Up" This is a study of Psalms 120 through 134. This study is also being taught on Wednesday evening, being led by Betsy Thomas. Barbara Muirhead is the leader of a study on Galatians and Tim and Martha Jo Melton and Ashley and Shane Floyd are leading a class on "The Pressure's Off", a study by Dr. Larry Crabb.



It is not too late to join one of these studies. Plan for a morning with the Women in the Church and study Gods word. If you can't make a Tuesday morning, join one of the classes on Wednesday Evening.

God has blessed us this month as Donna Parker has agreed to be the Ministry Coordinator for Table Cloths.


WIC had their first meeting of the year on Monday January 21<sup>st</sup> and at the meeting the Council voted to add the "Immediately Past President" to the slate of officers. This change was made in an attempt to ensure more continuity on the Council .The past President has knowledge that she can pass on to the following year's council. I have agreed that I will continue on as Past President next year and Jeanie Gour has agreed to continue the following year after her Presidency. This is a three year commitment (Vice President – President and Past President) and we think that it is well worth our time to serve the Lord in this manner.

Give thanks to God. He has a plan for each of us. Plan today to be more active with your SPC Family.

Mark you calendar for the upcoming WIC events.

February 18, 2008	WIC Council and Coordinators Meeting; 6:30 Council and 7:30 Coordinators The WIC meetings are held at the church unless otherwise posted, and all women are encouraged to attend!
-------------------	---

Living with God,  
WIC President – Sandra Franklin



## SURFSIDE SCRAPBOOK

The 2007 scrapbook for Surfside Presbyterian Church is finished and in the narthex please stop by and take a look at this lovely keepsake!



## STREET REACH MERCY MINISTRY OF THE MONTH

Street Reach Ministries of Myrtle Beach is a non-profit South Carolina religious corporation located in downtown Myrtle Beach. It was founded in 1992 for the purpose of feeding and sheltering people with no place to go, and to provide a Christian based program for those earnestly desiring to turn their lives around. Street Reach is overseen by a Board of Directors and an on-site Mission Director.

**Did you know that Street Reach:**

- Serves over 3,000 meals to homeless people in Myrtle Beach each month.

- Provides safe shelter for over 60 homeless people in Myrtle Beach per night
- Provides 75 – 100 showers for homeless people daily.
- Provides transportation to jobs and medical care daily.
- Provides in-house counseling and educational programs.
- Provides care packages and shelter for women with children as room allows.
- Provides worship services each evening for the homeless.
- Teaches a 12-step discipleship program for any desiring to work and turn their life around.
- Operates entirely on donations from local churches, businesses and concerned individuals.

**Street Reach's current needs:**

<ul style="list-style-type: none"> <li>• Men's <u>clean</u> clothing</li> <li>• Men's work socks</li> <li>• Women's <u>clean</u> clothing</li> <li>• Paper napkins</li> <li>• Styrofoam plates/bowls/cups</li> <li>• Plastic forks/spoons</li> <li>• Instant Coffee</li> <li>• Sugar</li> </ul>	<ul style="list-style-type: none"> <li>• Powdered Creamer</li> <li>• Tea</li> <li>• Bath Towels</li> <li>• Laundry Detergent</li> <li>• Bleach</li> <li>• 55 gallon garbage bags</li> <li>• Spiral notebooks</li> </ul>
---	---

Their vision was to have a new facility that would be large enough to provide shelter and a healthy meal to the growing homeless population in Horry County. This has come to fruition and they will soon be moving into their new home on Osceola Street in Myrtle Beach. Praise God!

A drop-basket, located in the Fellowship Hall, will be available during the month of February. If you would like to make a donation of any of the items listed above, please drop them in the designated basket and we will make sure all your donations are delivered. Thank you for your participation in this ministry.

**ClubMom**



clubMom is an outreach ministry to stay-at-home mothers in our church family and community. Our purpose is to provide fellowship and encouragement for work at home mothers and their children; provide an opportunity where women can be involved in ministry to other stay-at-home moms. clubMom meets on Thursday mornings at the church from 10:00 AM - Noon. Light refreshments are provided. If you have any suggestions, please call Abby Cook at 215-4452. We look forward to meeting you and your children on Thursday.

**Joyful Noisemakers**

The Joyful Noisemakers are all of our church members/attenders who are over the age of 65. We do, however, encourage you to invite guests, like friends and neighbors, to share in our events. Watch the church newsletter and the Sunday bulletins to stay updated on the following events and others that may be added later.

In order to make accurate reservations, or to provide sufficient food for everyone, you MUST sign up to attend our events. We have to be firm about our "contact by" dates in order to run successful activities! Also, due to the expenses involved, any cancellations after the cut-off dates and "no-shows" may still be subject to pay the cost for that event.

<b><u>UPCOMING EVENTS:</u></b>	
Feb. 3 <sup>rd</sup>	Super Bowl Sunday @ the Snyders' home – call Raeanne @236-8334
Feb. 22 <sup>nd</sup>	Lunch at Land's End – call Jane @215-6933
Mar. 3 <sup>rd</sup>	Culinary Arts – call Jane @215-6933

We look forward to seeing lots of our Joyful Noisemaker "regulars" at these events! If you've never joined us before, or if you are new to our church, these occasions are great times to meet new people and get to know others even better. Bringing guests with you is a wonderful way to show them the love of Christ and the fellowship of believers. So come on and make some "joyful noise" with us!



## SANCTUARY FLOWERS

DID YOU KNOW...you can honor a special someone or particular date with our sanctuary flowers?? Perhaps you would like the flowers to be in memory of a loved one. Please see the pink clipboard in the church office on the counter for full details or to sign-up. Remember to sign-up early to reserve your date. Should you need further assistance, please call Sheryl Roberson 650-4588.

## ESL MINISTRY

Our ESL program is going very well, averaging 26 students a week, all anxious to learn our English language. We are testing some students and they are advancing to a higher level. Twenty plus members faithfully volunteer their time each Thursday evening from September to April, teaching or assisting the teachers, helping in the nursery and with school age children. Other members kindly donate cookies and cakes each week for everyone to enjoy.

You can volunteer too, as we are in need of substitute interviewers, substitute testers and a helper to assist in the nursery one Thursday a month, from 6:45 p.m. – 8:30 p.m. Please call Bill Day @215-7181 or Lorelle Frushour 651-4894.

We ask for your continued prayers in ministering to our many new friends. Thanks to all of you!

In His Service,  
Lorelle Frushour



## A Red Carpet Affair

The Youth's Winter Banquet will be held here on February 16th at 6:30pm. Dinner will be served and there will be entertainment filled with fond memories of old Hollywood. Tickets are \$7 for adults and \$3 for children. Tickets will be available in the narthex on Sunday mornings and in the fellowship room on Wednesday nights. Everyone is invited to help raise money for the youth's summer mission trip to Belize

## CONGRATULATIONS

To Shane and Ashley Floyd on the birth of their baby girl, Penelope, born Tuesday, January 22<sup>nd</sup>. She weighed 7 lbs. and 4 oz. and was 19" long. Proud grandparents are Neal and Ann Floyd. We praise God from whom all blessings flow!

## THANK YOU FROM CEF

I would like to thank the workers and volunteers who have assisted the Lord in leading 11 young kids, kindergarten – 5<sup>th</sup> grade, to proclaim Jesus as their Lord and Savior. Dave Luck, Dolores Paige, Church & Peggy Paton, Sherie Salem, Joyce Cushing, Jim Franklin, Jane Gill, Joyce Herian, Debbie Riddle, Carole Adams, Verna Allen, Jan Benton, Donna Bower, Jim Frushour, Kate Jensen and Cindy Westmoreland. If you would like to learn more about the Good News Club sponsored by the local Child Evangelism Fellowship, there will a dinner and guest speaker on Thursday, February 7<sup>th</sup> @6:00 p.m. at the Landmark Resort in Myrtle Beach. If you are interested in attending, please contact Walt Robbins @215-8839 or Jean Cavanaugh @492-7345.

Jean Cavanaugh

## THANK YOU FROM HELPING HAND

Thanks from Helping Hand to all our church family for your generous donations at Thanksgiving and the providing of gifts for 53 children from the Angel Tree at Christmas. Thanks, also, to Christina Howell and Tracy Jenne for their fine work as our Angel Coordinators. Many needy families in our area were truly blessed during the holidays because of your caring and generosity.

## MOBILE MEALS

### **February 11-15**

Please contact Sarah Allen (650-8588) if you would like to serve 1 day every six weeks, or if you would like information pertaining to this service.